



**NSL** *SUGARS*

*Sustainable Food, Fuel & Power*

## **NSL Sugars Limited, Unit-II, Aland**



[www.nslgroup.co.in](http://www.nslgroup.co.in)

NSL Textiles Pvt. Ltd. ● [www.nsltextiles.com](http://www.nsltextiles.com)

NSL Infratech Pvt. Ltd. ● [www.nslinfratech.com](http://www.nslinfratech.com)

Nuziveedu Seeds Pvt. Ltd. ● [www.nuziveeduseeds.com](http://www.nuziveeduseeds.com)

NSL Renewable Power Pvt. Ltd. ● [www.nslpower.com](http://www.nslpower.com)

NSL Cotton Corporation Pvt. Ltd. ● [www.nslcottoncorporation.com](http://www.nslcottoncorporation.com)

NSL Icon, 8-2-684/2/A, Road No.12, Banjara Hills, Hyderabad - 500 034, India Ph: 91-40-30514444, Fax: 91-40-23327919

# UCR Basic Details



BASIC INFORMATION	
Title of the project activity	Carbon Credit Generation Project by NSL Sugars Ltd. Aland Unit Karnataka, India
Scale of the project activity	Large Scale
Completion date of the PCN	15/11/2024
Project participants	NSL Sugars Limited Unit - II, Aland
Host Party	India

## Cane collection section



**Picture 1: Cane collection and crushing sections of Aland unit**



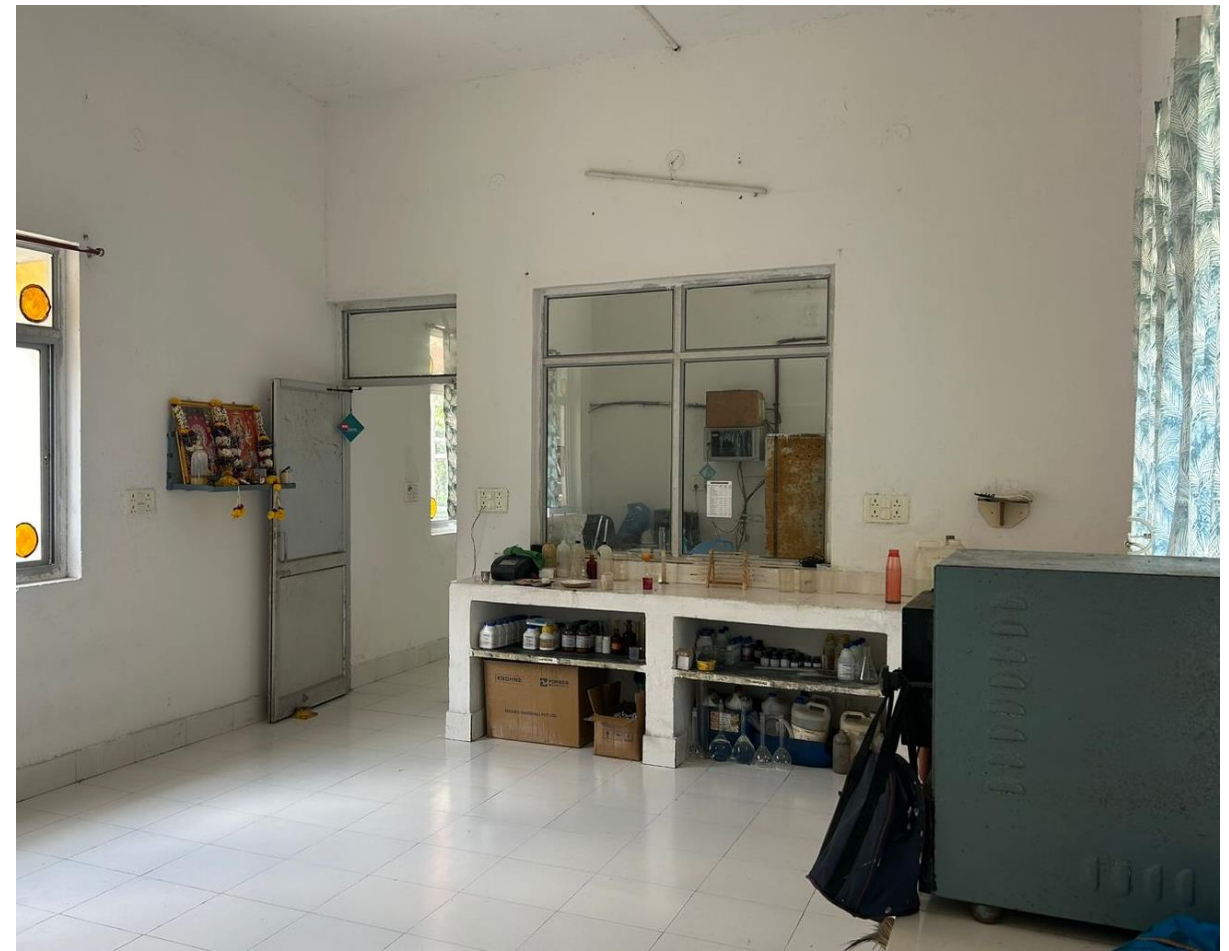
**Picture 2: Boiling house where impurities are removed from sugarcane juice**



**Picture 3: (a) Mill house where the cane is crushed to extract juice and (b) Centrifugal section used for separation of sugar crystals from the molasses**



**Picture 4: (a) Boiler produce steam that's used in many stages of sugar manufacturing, (b) Turbine section generate electricity and power for the plant's uses and export**



**Picture 5: (a) Water treatment plant capacity of 25 m<sup>3</sup>/hr and (b) WTP analysis Lab**



Picture 6: (a) UASB (Anaerobic) Reactor and (b) Aerobic treatment of wastewater



THANK  
YOU

**NSL Sugars Limited, Unit-II, Aland**

Mr. Narayanamurthy KVVS

+91 7875558765

[environment.aland@nslsugars.com](mailto:environment.aland@nslsugars.com)